



# Everyday Elegance Simply Sent Box

The Simply Sent Card Kits are a great way to make beautiful cards in a snap. With some Simple Scoring, you can turn this pre-printed card into an elegant gift box in just a few minutes!

**Supplies:** (Shop Online 24/7 at [juliedavison.stampinup.net](http://juliedavison.stampinup.net))

- [Everyday Elegance Simply Sent Card Kit](#)
- [Simply Scored Tool](#)
- [Medium Cello Bags](#)
- [Organza Ribbon](#)
- Sticky Strip
- Scissors



## Directions:

1. Put the laser cut decorative edge at the top of the Simply Scored Tool and score down the card at 1-1/8" and 4-3/8".
2. Turn the card 90 degrees and put the white end of the card against the left side of the scoring tool. At 2", score from the top and bottom edges up to the perpendicular score lines. The pre-printed card is already scored at 4 1/4". Score another line at 5-3/8".
3. Cut along the score lines on the side. Completely cut off the 2" side panels. (See Figure 2.)
4. Fold on all of the score lines and assemble the box using Sticky Strip.
5. Fill with candy or a gift and add self-adhesive tag with stamped greeting on the front.

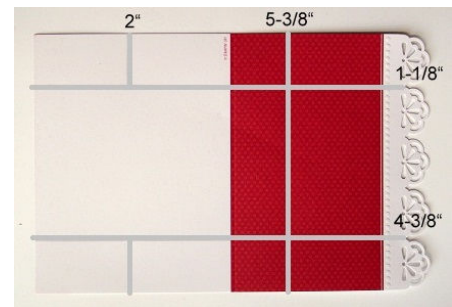


Figure 1: Score on Gray Lines

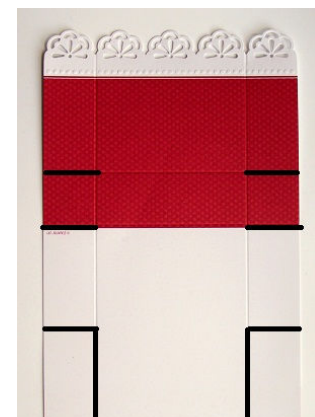


Figure 2: Cut on Black Lines