



Julie Davison, Stampin' Up! Demonstrator
217-954-0232, julie@the-davisons.com
www.juliedavison.com * juliedavison.stampinup.net

Pop N' Cuts Treat Box

Inspired by Tanya Bell (Australia)

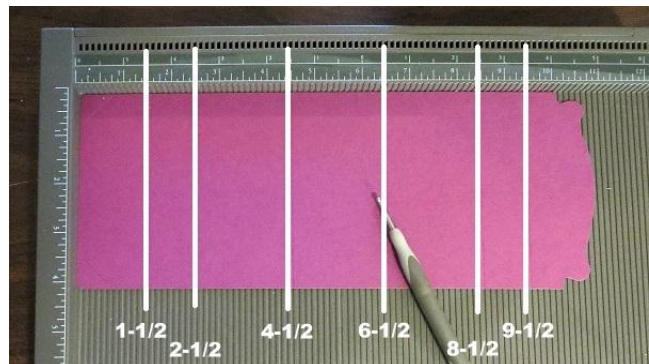
Measurements:

Embellished Events stamp set
Rich Razzleberry ink pad
4 1/4" x 11" Rich Razzleberry cardstock
(2) 2 1/2" x 3" Rich Razzleberry cardstock
(2) 4" x 1 3/4" Floral District DSP
1/2" x 3" Whisper White cardstock
1 Silver Button
Whisper White Baker's Twine
Simply Scored Tool or
Stampin' Trimmer
Pop N' Cuts Card Base Die
Big Shot
Large Oval Punch
Mini Glue Dots
Sticky Strip

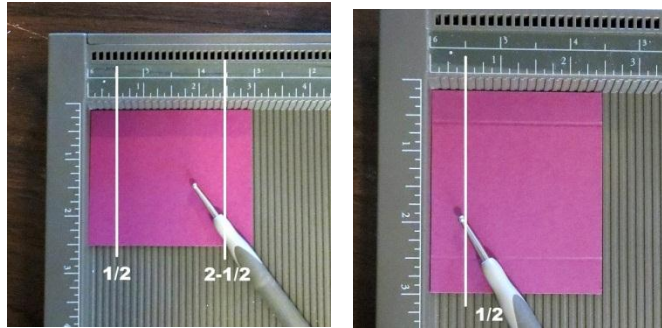


Instructions:

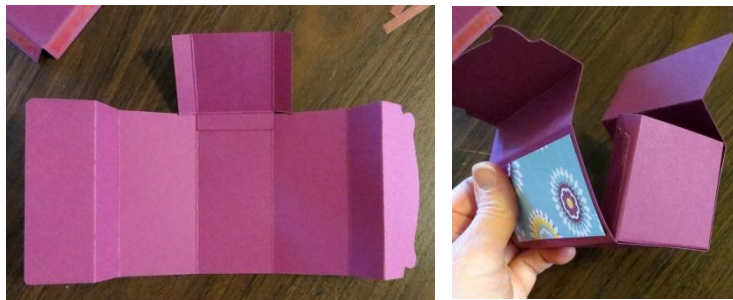
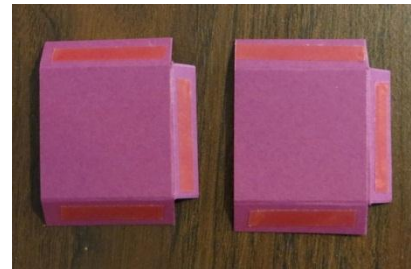
1. Die cut the 4 1/4" x 11" Rich Razzleberry cardstock using the Pop N' Cuts Card Base die in the Big Shot.
2. Score the Rich Razzleberry cardstock at 1 1/2", 2 1/2", 4 1/2", 6 1/2", 8 1/2", and 9 1/2".
3. Hold the ends of the cardstock together and punch a hole with the Large Oval Punch to create a handle.
4. Adhere the designer series paper to the third scored section from each end (there is one piece on the front and one piece on the back of the box).



5. With the longer (3") end at the top of the Simply Scored Tool, score the smaller Rich Razzleberry cardstock pieces at 1/2" and 2 1/2". Turn 90 degrees and score at 1/2".



6. Cut off the small squares in the corners that were created from the score lines.
7. Apply Sticky Strip to all three tabs of both pieces of Rich Razzleberry cardstock. These will be the sides of the box.
8. Fold on box on all of the score lines.
9. Attach the piece of cardstock for the sides to the box as shown in the pictures.



10. Stamp the sentiment in Rich Razzleberry ink on Whisper White cardstock. Cut a banner tip and attach the greeting to the box with SNAIL adhesive.
11. Thread the large Silver Button with Whisper White Baker's Twice and tie a bow. Attach the button to the box using Mini Glue Dots.

Visit www.juliedavison.com
For more FREE Tutorials & Stampin' Up! Ideas